



# ELA-Bohrerstände



*ELA bur blocks, ELA porte-fraises, ELA portafresa*

sterilisierbar bis max. 138°C, sterilizable up to 138°C max, stérilisé à max. 138 °C, esterilizable hasta 138 °C



## BS 314 030

30 FG-Instrumente  
30 FG instruments  
30 FG instruments  
30 instrumentos FG

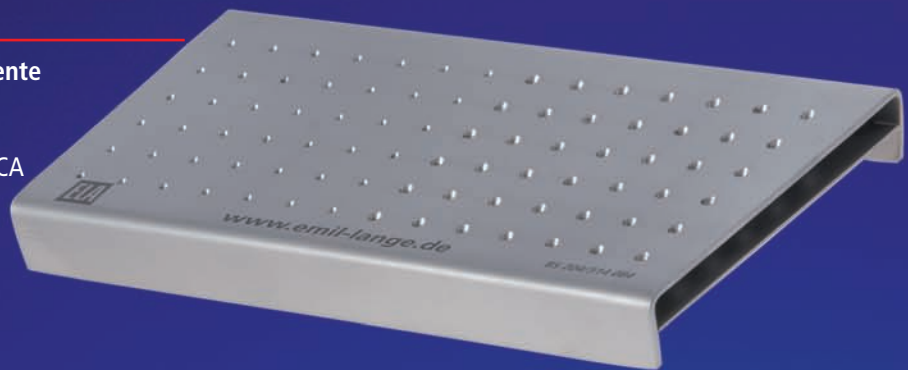


## BS 204 030

30 Winkelstück-Instrumente  
30 RA instruments  
30 CA instruments  
30 instrumentos CA

## BS 204/314 084

42 FG- und 42 Winkelstück-Instrumente  
42 FG and 42 RA instruments  
42 FG et 42 CA instruments  
42 instrumentos FG y 42 instrumentos CA



## BS 314 084

84 FG-Instrumente  
84 FG instruments  
84 FG instruments  
84 instrumentos FG



## BS 204 084

84 Winkelstück-Instrumente  
84 RA instruments  
84 CA instruments  
84 instrumentos CA

